



Oklahoma Agricultural Construction General Permit

Are you planning an agricultural construction project larger than 1 acre?

You might need to apply for coverage under ODAFF's Agricultural Pollutant Discharge Elimination System—or AgPDES—Construction General Permit.

When it rains, storm water passes through construction sites. Storm water carries nutrients, chemicals, and dirt that can harm creeks, lakes, and streams. Depending on the size of your agricultural construction site, you might be required to apply for coverage under ODAFF's Construction General Permit, which helps protect your community's clean water.



You might need Construction General Permit coverage if you're constructing one of the following, but not limited to:

Dry Litter Poultry Operations

- Litter storage sheds
- New barns
- Compost facilities

Poultry Operations (with Lagoon)

- Lagoons
- New barns
- Composting facilities
- Impoundment closures
- Diversion structures

Swine Operations

- Lagoons
- New barns
- Composting facilities
- Impoundment closures
- Diversion structures
- New pens
- Truck washes (lagoon, facilities, or other)

Dairy Operations

- Lagoons
- New barns
- Composting facilities
- Impoundment closures
- Diversion structures
- New pens

Beef Operations

- Lagoons
- Composting facilities
- Impoundment closures
- Diversion structures
- New pens



Who Needs a Permit?

You might need to submit a Notice of Intent to get permit coverage if:

- Your project will disturb 1 or more acres, including borrow areas (the areas where you will dig materials for fill), staging (the place where you store equipment), and materials storage. This includes on-site and off-site areas.
- Your project will disturb less than 1 acre of land but is part of a common plan of development or sale that will ultimately disturb 1 or more acres of land.
- You control the plans or day-to-day work for your project's construction.
- You own the property under construction.
- Water from your project could run off into nearby creeks, lakes, or streams.
- Your project is not already covered by an AgPDES permit or Oklahoma Department of Environmental Quality permit.

Please contact ODAFF if you're not sure whether you need a permit.

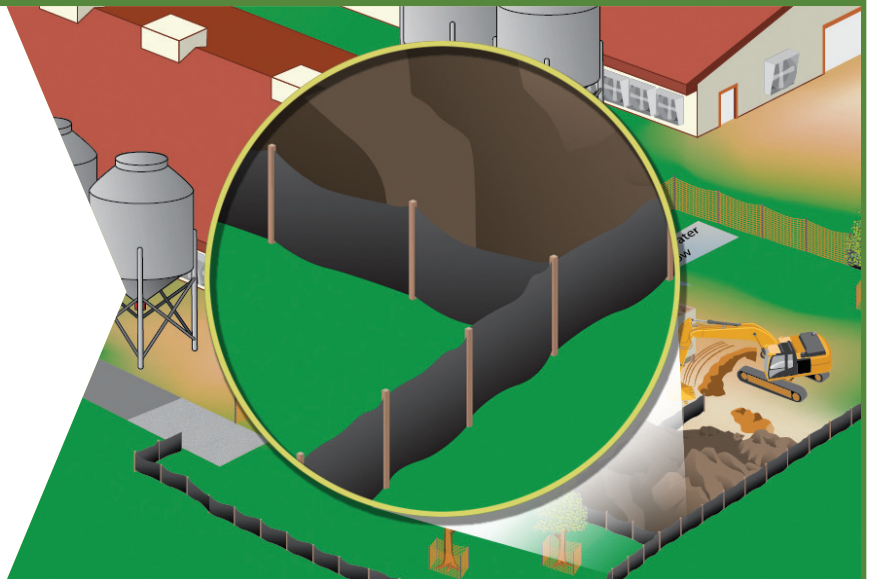
For More Information

Call ODAFF: (405) 522-5493 ■ Website: <https://ag.ok.gov/divisions/agricultural-environmental-management/>

Permit Requirements

In general, under your permit, you must:

- Create and follow a Storm Water Pollution Prevention Plan, describing your project and the steps you will take to manage storm water at your site.
- Control storm water, dirt, and nutrient runoff from your construction project.
- Inspect your project, fix any problems, train your staff, and keep records.



Next Steps If You Need a Permit

1. Read the permit information in the "AgPDES Construction Storm Water Program" section of ODAFF's website and learn more about your responsibilities: <https://ag.ok.gov/divisions/agricultural-environmental-management/>.
2. Develop a Storm Water Pollution Prevention Plan.
3. At least 30 days before starting construction activities (including moving any dirt), submit a Notice of Intent to ODAFF.



Oklahoma Dept. of Agriculture, Food, & Forestry ■ AEMS Division
P.O. Box 528804 ■ Oklahoma City, OK 73152